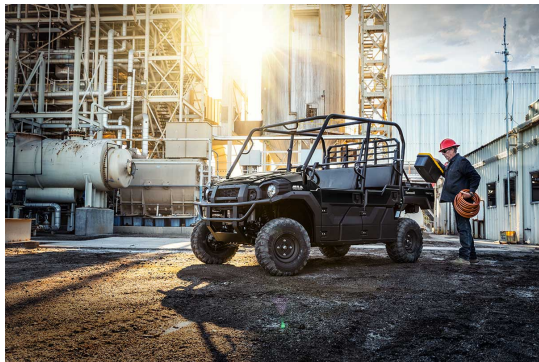


MULE PRO-DXT DIESEL



SPECS

POWER

Maximum Power	18 kW {24 PS} / 3,600 rpm
Maximum Torque	52 Nm {5.3 kgfm} / 2,400 rpm
Engine	4-stroke In-Line 3-cylinder diesel
Displacement	993 cc
Bore x Stroke	74.0 x 77.0 mm
Compression Ratio	23.5:1
Valve System	OHV
Fuel System	In-line injection pump
Starting	Electric
Cooling	Liquid-cooled
Lubrication	Forced lubrication, wet sump
Transmission	Dual range (high/low) CVT with reverse
Primary Reduction Ratio	3.334 ~ 0.756 (belt converter)
Gear Ratio: Forward (High)	1.952 (34/33 x 36/19)
Gear Ratio: Forward (Low)	3.876 (45/22 x 36/19)
Gear Ratio: Reverse	3.009 (27/17 x 36/19)
Final Reduction Ratio: Front	6.382 (31/17 x 35/10)
Final Reduction Ratio: Rear	6.245 (31/21 x 55/13)
Final Drive	2WD/4WD, shaft, dual-mode differential

CAPABILITY

Frame	Ladder type, tubular steel
Front Suspension	Double wishbone
Rear Suspension	Double wishbone
Front Wheel Travel	222 mm
Rear Wheel Travel	217 mm (left), 220 mm (right)
Steering	Rack and pinion with Electric Power Steering
Rake	4.4°
Steering Angle (L/R)	40° (IN) / 31° (OUT), 40° (IN) / 31° (OUT)
Front Tyres	26 x 9.00-12 4PR
Rear Tyres	26 x 11.00-12 4PR
Front Brakes	Dual ø212 mm discs
Front Calipers	Two-piston
Rear Brake/s	Dual ø212 mm discs
Rear Caliper/s	Single-piston

Parking Brake Dual discs (mechanical)

DETAILS

Dimensions (LxWxH)	3,385 x 1,625 x 1,970 mm
Wheelbase	2,345 mm
Road Clearance	260 mm
Seat Height	880 mm (front), 965 mm (rear)
Curb Weight*	881 kg
Estimated Dry Weight**	846 kg
Fuel Capacity	30 litres
Tread Front / Rear	1,389 mm / 1,321 mm
Turning Radius	4.8 m
Cargo Bed Dimensions (LxWxH): 6-Person Mode	560 x 1,363 x 279 mm
Cargo Bed Dimensions (LxWxH): 3-Person Mode	1,085 x 1,363 x 279 mm
Cargo Bed Capacity: 6-Person Mode	158 kg
Cargo Bed Capacity: 3-Person Mode	453 kg
Seating Capacity	3 or 6
Vehicle Load Capacity	714 kg
Towing Capacity	907 kg
Lighting	2x halogen headlights
Model Code	KDT1000BSSNN